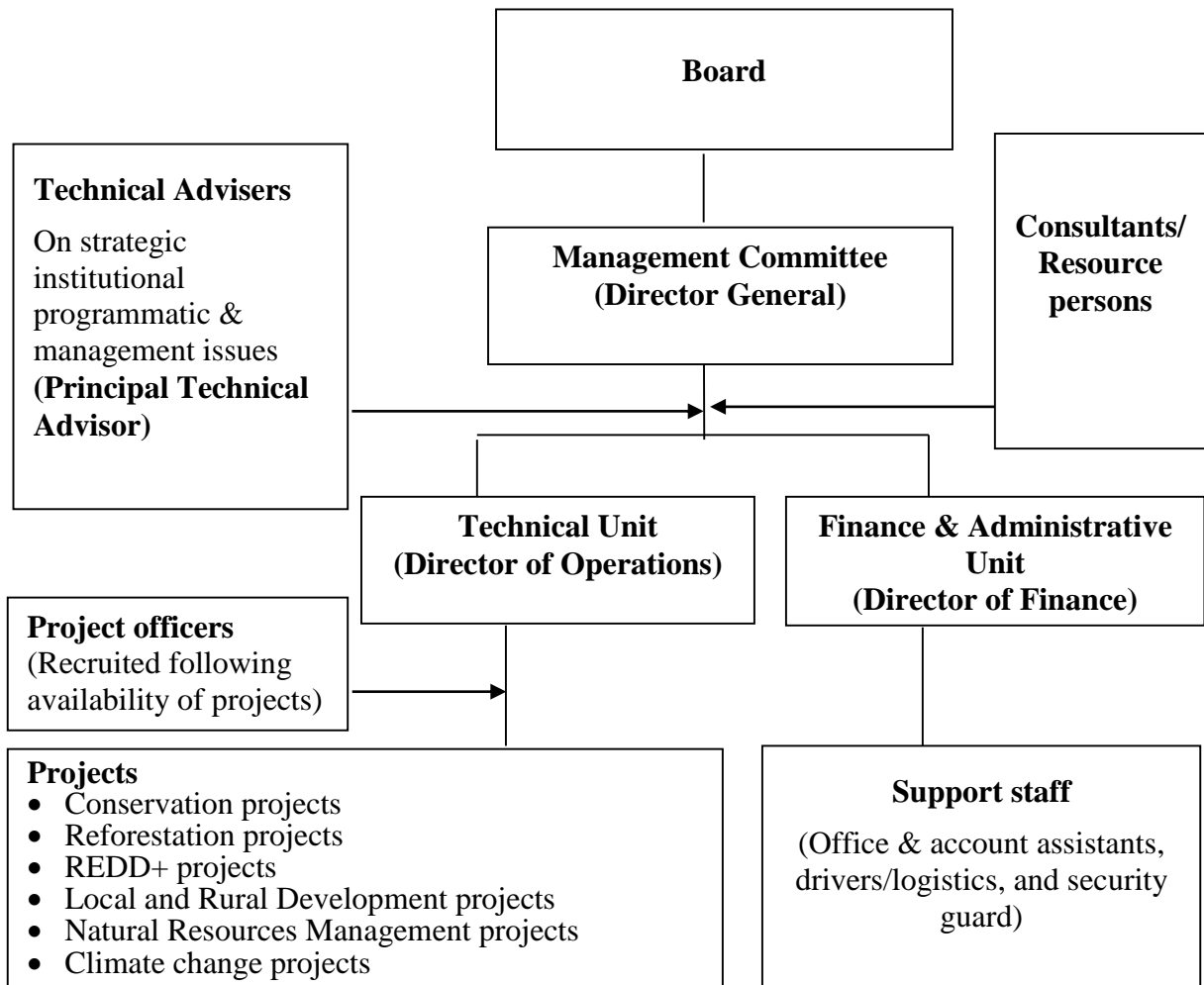




## **FWC Organisational Chart**



### **Governance structure**

Forests & Wetlands Consulting (FWC) has three supreme coordinating mechanisms: the Board and Management Committee and Project Management Group.

### **Board**

The Board is a decision-making body of the Forests & Wetlands Consulting (FWC) making decisions and major strategic, political and functional orientations of FWC and decisions. It is reserved to the Directors and Principal Technical Advisor. Any time it may invite other resource persons and partners of the FWC depending on the subject to be discussed. The board is held at least twice a year at the invitation of the Chairman (The Director General) and the secretariat is provided by the Director of Operations of FWC.

## **The Management Committee**

Consist of program and project management team on the ground and the partners concerned. The Management Committee (MC) is held at least once quarterly on the invitation of the Chairman (The Director General) and either the Director of Operations of FWC or Finance Director of FWC provides the secretariat. Project officers may also invited.

## **Project Management Group**

Comprising the Technical & administrative units, the Project Management Group (PMG) see into day-day management of projects. They may be headed or controlled by Operations Director or Finance Director. Meetings are held at least once every month with project officers who may also assume the secretariat (Rapporteur).